

## SPECIAL VARIANTS SERIES 2400-S5-OZB

### FACTS

- » Up to 150 weighings per minute in combination mode
- » Fully automatic calibration and taring
- » Portion weights for individual dump: up to 1.500g / 3.000g
- » Product-specific equipment
- » Higher weights in large portion or multiple dump mode are possible
- » Ideal for high-speed and mixing applications
- » Maximum accuracy
- » Dust and water-repellent design
- » Combining, mixing, counting and dosing applications

### TECHNICAL DATA

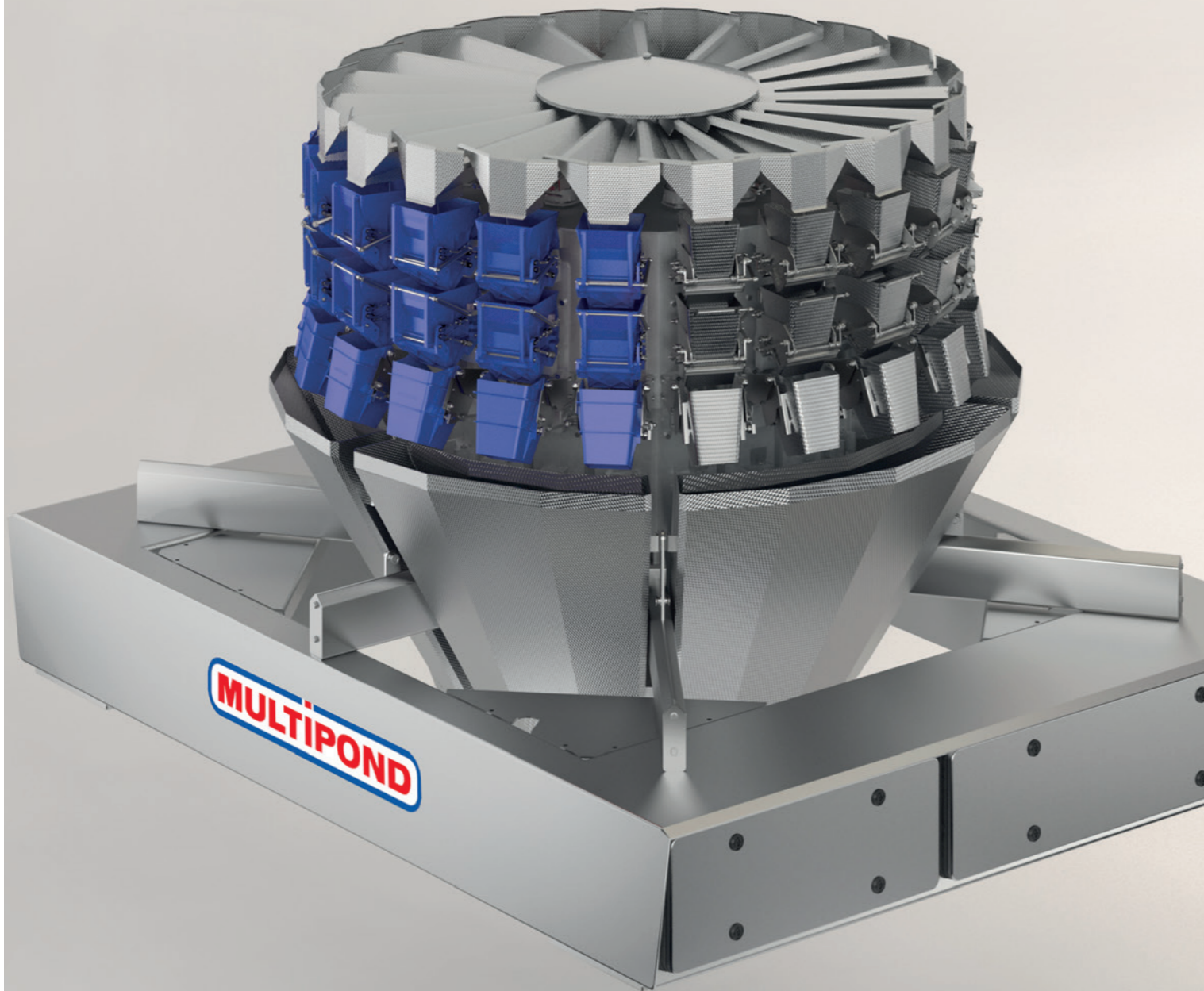
Type	Number of weigh hoppers	Max. theoretical weighings per minute* (depending on product and target weight)
MP 16-2400/1250-S5-OZB	16	70
MP 16-2400/2500-S5-OZB	16	70
MP 20-1000/1250-S5-OZB	20	150
MP 20-1000/2500-S5-OZB	20	150

\* in combination mode

### MACHINE DIMENSIONS

A	B	C	D for 45°	D for 60°
1250	1790	1300	39	453
1250	1790	1300	39	453
1650	2190	1300	169	662
1650	2190	1300	169	662

Subject to change.



### S5-OZB: WEIGHING SYSTEM WITH SPECIAL REJECT OPTION FOR OVER WEIGHTS WITHOUT USING MEMORY HOPPERS

The principle of this system is based on the principle of the S5R version, while doing without memory hoppers. Following the weighing process, the portions are directly rejected down a separate chute via specially developed swivelling funnels. The swivelling funnel changes its position in case of over weights. In this case it swings outwards **6** and rejects the overweight, correctly sorted, **7** down a separate chute before packaging process. During this time the weighing system continues the weighing process, so that there is no loss of weighing performance / speed. The discarded product can now be fed back to the weighing process manually or automatically. This guarantees the highest possible product yield. This option is available for weighing systems with 16, 20, 24 and 36 weighing heads. This system is thus optimally suited for counting individual piece weights and weighing small quantities or target weights, as is frequently necessary in the ready meals or confectionery industry, for example.

#### Advantages compared to conventional systems:

- » Discharge of over weights without sacrificing speed
- » Correctly sorted reject and thus maximum product yield

